



# THE SAFETY COLLECTION

Sustainably manufactured and built to outlast the toughest work environments



SUN COUNTRY  
SAFETY WEAR

EXCLUSIVE DISTRIBUTOR IN  
NORTH AMERICA FOR





## About Grisport

**Craftsmanship & Manufacturers:** In 1977 Italian brothers Graziano and Mano Grigolato decided to put their know-how to work and set up Grisport, a specialist producer of handcrafted boots and shoes for trekking, leisure and safety. Over the years Grisport has focused on state-of-the-art technology, innovation and R&D to become the leading manufacturer it is today.

**Expertise, Experience, Research & Development and Innovation.** These are the ingredients used to patent the construction of Grisport's footwear and the techniques used to make high-performance membranes and materials, yet they still incorporate the traditional experience and attention to detail associated with hand-crafted products.

**Comfort First, Forever.** Grisport consistently thrive to fulfill their paramount, ongoing mission - **Comfort** - By creating a range of more than 5,000 styles of quality footwear featuring stylish designs and state-of-the-art technology. Today with its 40,000m<sup>2</sup> factory and over 2,000 employees, Grisport is one of the world's finest examples of a successful, 'Made in Italy' business.



SUN COUNTRY  
SAFETY WEAR

## About Sun Country Safety Wear

Our mission is to equip people to make a difference in their world. We do this by sourcing outstanding products and by trying to make a positive change in communities where we live and work.

The people that wear our products inspire the way we run our business. We carry work boots and shoes comfortable enough to wear all day and rugged enough to outlast any work environment. These products are guaranteed sustainable, constructed from high quality renewable materials from a low emission environment, where possible.

Our team is committed to doing the right thing. Whether it's making products with the environment in mind, or volunteering in our communities, we care about our colleagues, our community and our planet.

By working together we can create an economically, socially and environmentally sustainable planet. We are proud to be the exclusive distributor of Grisport safety footwear in North America.

## Process



**Design**



**Selected Materials**



**Handmade Works**



**Technology**



**Service**



**Lab Tests**



**Quality Control**



## Factory

At the foot of the Dolomite mountains sits Grisport's state of the art production facilities. The beautiful surroundings and the environment are tremendously important to the company as they aim to be as environmentally friendly as possible. 70% of the power used to produce Grisport footwear comes from solar energy, which is about 850,000 kWh per year.

## Values

### **Eco Sustainability:**

Grisport maintains the strictest standards of eco-sustainability when selecting raw materials. Furthermore a photo-voltaic system on the factory roof, which covers approximately 15,000 m<sup>2</sup>, supplies 70% of the power required for production

### **Made in Italy:**

Grisport footwear is Italian to the core. Not only do they manufacture all of their products in Italy, they also create and develop process there as well.

### **Responsibility:**

Grisport has produced a Charter of Human Responsibilities, or Code of Ethics, to ensure that the company is committed to respecting the rights, work, and dignity of the people involved on all levels and in all areas of manufacturing their products.

### **Traceability:**

Grisport has implemented an effective traceability system that enables them to trace back every step in the production process so they always know which materials were used.



# VIBRAM

Thanks to the new design technology used for the sole and breathable perforated toe cap, this line of Vibram footwear is now lightweight with a sporty look yet still offers the same safety features and comfort.



**C** **3D Air**  
Breathable, anti-abrasion lining

**B** **Dry Shord**  
Antibacterial, extractable, anatomic and breathable insole

**A** **Wind Tip**  
Pierced steel toe cap for breathability

**D** **See & Protect**  
Reflective material insert for visibility

**E** **Shield & Flex**  
Composite pierce-resistant midsole, extra light, extra flexible

**F** **Blow Zone**  
Unlined side area for high breathability

**G** **Block-up**  
Anti-twist system with ankle support

# Boa System

This model of Grisport Safety uses the innovative Boa Closure System. With nearly 14 million Boa dials worldwide the award-winning, patented Boa Closure System is reinventing how footwear performs.

## Key features:

**Durable.** Made from aircraft-grade stainless steel, Boa laces are stronger per gram than tank armor.

**Secure.** Once tension is locked in, Boa reels and laces stay that way.

**All-day comfort.** Boa reels let you dial in the perfect lace tension, for a custom fit with no pressure points.

**On-the-fly adjustment.** Get easy, one handed lace tension adjustment with a quick turn of the Boa dial.

**Quick on, quick off.** The Boa Closure System is fast. You have more important things to do than tie your boots.

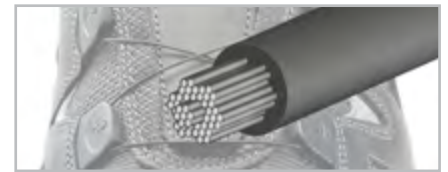
**Easy-to-clean.** Boa Closures shed mud, dirt and grime and can be easily washed.



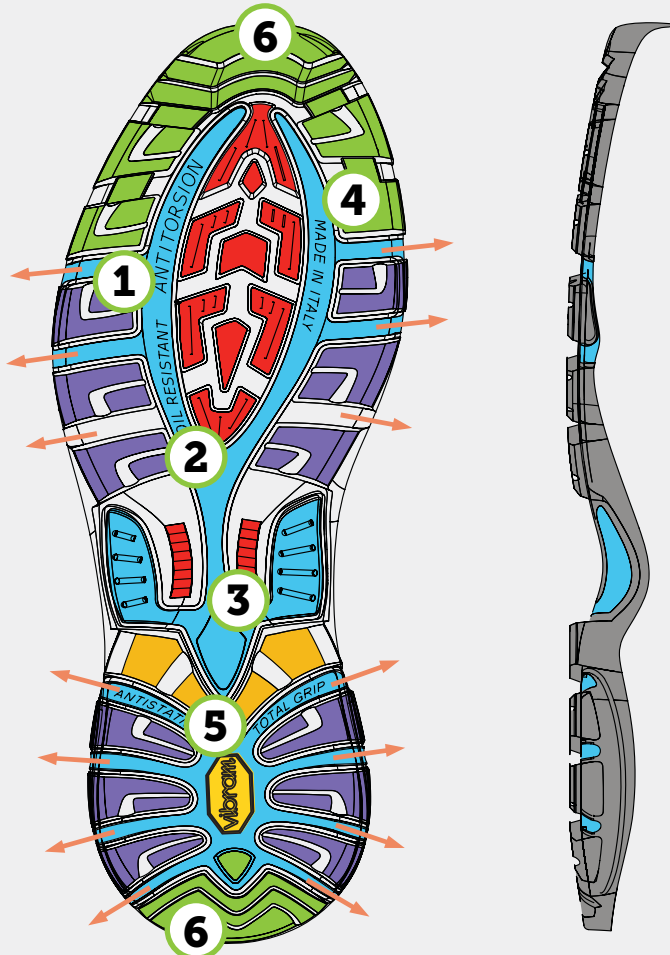
**To close:** Push the knob inward and turn dial clockwise



**To loosen:** Pull knob outward



Special Steel Cable section



Tested where it matters!

- 1 Flex**  
line provides natural rolling
- 2 Material**  
different material density for outsole arch stability and comfort
- 3 Engraved Shank**  
(90° profile) for better traction on uneven ground
- 4 Draining channels**  
to enhance grip and safety
- 5 Spider Design**  
for axial guidance and control
- 6 Lugs**  
large toe and heel lugs for grip on any terrain

GRIP	BRAKING	STABILITY
TRACTION	CUSHIONING	SELF-CLEANING



### 74653CD44

Durable, patented Vibram PU/TPU sole  
Perforated steel toe cap  
Composite midsole  
Heel Support System  
Water-resistant & Breathable upper  
Scuff-resistant toe

**Lining:** AT 488 3D Airmesh  
**Sizes:** 5-13.5



### 74651CD44

Durable, patented Vibram PU/TPU sole  
Perforated steel toe cap  
Composite midsole  
Heel Support System  
Water-resistant & Breathable upper  
Scuff-resistant toe

**Lining:** AT 488 3D Airmesh  
**Sizes:** 5-13.5



### 73667CC17K

Durable, patented Vibram PU/TPU sole  
Perforated steel toe cap  
Composite midsole  
Heel Support System  
Water-resistant & Breathable upper  
Scuff-resistant toe

**Lining:** L-Skin  
**Sizes:** 5-13.5  
**Colour:** Black



### 73681CS12K

Durable, patented Vibram PU/TPU sole  
Perforated steel toe cap  
Composite midsole  
Heel Support System  
Water-resistant & Breathable upper  
Scuff-resistant toe

**Lining:** L-Skin  
**Sizes:** 5-13.5  
**Colour:** Black



## 73663CD7

Durable, patented Vibram PU/TPU sole  
Perforated steel toe cap  
Composite midsole  
Heel Support System  
Water-resistant & Breathable upper  
Scuff-resistant toe  
BOA Closure System.

**Lining:** AT 488 3D Airmesh  
**Sizes:** 5-13.5  
**Colour:** Black



## 74733CD5T

Durable, patented Vibram PU/TPU sole  
Perforated steel toe cap  
Composite midsole  
Heel Support System  
Water-resistant & Breathable upper  
Scuff-resistant toe

**Lining:** Sympatex  
**Sizes:** 5-13.5  
**Colour:** Black



## 74689CD72

Durable, patented Vibram PU/TPU sole  
Perforated steel toe cap  
Composite midsole  
Heel Support System  
Water-resistant & Breathable upper  
Scuff-resistant toe

**Lining:** AT 488 3D Airmesh  
**Sizes:** 5-13.5



## 74691CD72

Durable, patented Vibram PU/TPU sole  
Perforated steel toe cap  
Composite midsole  
Heel Support System  
Water-resistant & Breathable upper  
Scuff-resistant toe

**Lining:** AT 488 3D Airmesh  
**Sizes:** 5-13.5



## 74673CD13

Durable, patented Vibram PU/TPU sole  
Perforated steel toe cap  
Composite midsole  
Heel Support System  
Water-resistant & Breathable upper  
Scuff-resistant toe  
BOA Closure System.

**Lining:** AT 488 3D Airmesh  
**Sizes:** 5-13.5  
**Colour:** Black



## 74661CD1

Durable, patented Vibram PU/TPU sole  
Perforated steel toe cap  
Composite midsole  
Heel Support System  
Water-resistant & Breathable upper  
Scuff-resistant toe  
BOA Closure System.

**Lining:** AT 488 3D Airmesh  
**Sizes:** 5-13.5  
**Colour:** Black



## 74725CA12

Durable, patented Vibram PU/TPU sole  
Perforated steel toe cap  
Composite midsole  
Heel Support System  
Water-resistant & Breathable upper  
Scuff-resistant toe  
BOA Closure System.

**Lining:** AT 488 3D Airmesh  
**Sizes:** 5-13.5  
**Colour:** Black



## 73723CE38

Durable, patented Vibram PU/TPU sole  
Perforated steel toe cap  
Composite midsole  
Heel Support System  
Water-resistant & Breathable upper  
Scuff-resistant toe

**Lining:** AT 488 3D Airmesh  
**Sizes:** 5-13.5  
**Colour:** Black





### 74763CD39

Durable, patented Vibram PU/TPU sole  
Perforated steel toe cap  
Composite midsole  
Heel Support System  
Water-resistant & Breathable upper  
Scuff-resistant toe  
BOA Closure System.

**Lining:** AT 488 3D Airmesh  
**Sizes:** 5-13.5  
**Colour:** Black



### 73751CD16

Durable, patented Vibram PU/TPU sole  
Perforated steel toe cap  
Composite midsole  
Heel Support System  
Water-resistant & Breathable upper  
Scuff-resistant toe

**Lining:** AT 488 3D Airmesh  
**Sizes:** 5-13.5  
**Colour:** Black



### 74693CD5K

Durable, patented Vibram PU/TPU sole  
Perforated steel toe cap  
Composite midsole  
Heel Support System  
Water-proof & Breathable upper  
Scuff-resistant toe

**Lining:** L-Skin  
**Sizes:** 5-13.5  
**Colour:** Black



### 74773CD7LT

Durable, patented Vibram PU/TPU sole  
Perforated steel toe cap  
Composite midsole  
Heel Support System  
Water-proof & Breathable upper  
Scuff-resistant toe

**Lining:** Wool & Spotex Tepor Selene  
**Sizes:** 5-13.5  
**Colour:** Black



# HARD WORK

This line of footwear ensures maximum resilience and safety. Equipped with a support system in the heel designed to get perfect control of the foot through optimum adherence during all phases of movement. The midsole is designed to protect feet from any shocks, and guarantees comfort and stability.



## The Support System

is an effective heel locking system designed to get perfect control of the foot through optimum adherence during all phases of movement. The fit is always comfortable and secure.



Senza System Support

Without Support System



## Dakar Leather

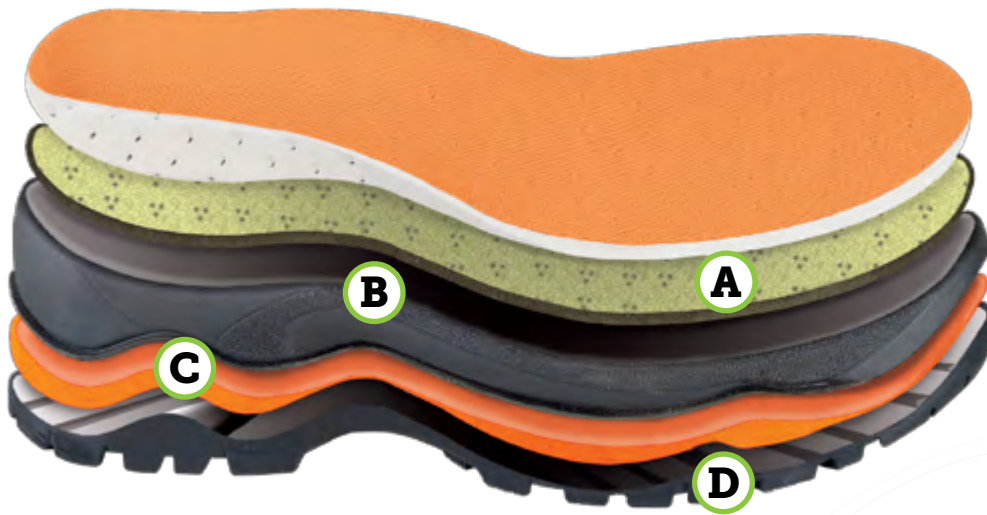
The substantial thickness of the oiled cow grain leather guarantees that the footwear is resistant to wear and tear, provides a good degree of stretch, and is easy to clean and maintain. Any variations in a colour are due to the natural qualities of the leather.



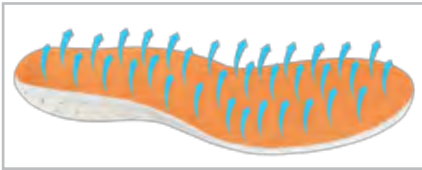
## Waterproof Testing

The footwear featuring Spotex or Sympatex membranes, which are made with waterproof construction, are tested in Grisport laboratories to guarantee the necessary standards of waterproof protection and breathability.

# Nonslip Sole



- A Lining**  
Insulating, breathable, removable insole lining
- B Midsole**  
Midsole made of PU with low specific weight
- C Stability**  
Different material densities to stabilize walking
- D Sole**  
Sole made of Vibram© non-slip rubber



## Removable Insole

Anatomic, perforated to get fantastic breathability, removable and antibacterial.



## Toe Joint

Insert that Cushions the upper bending point of the upper, offering total comfort to walking.



## Steel Toe Cap

200-joule impact at the toe. Compression 15KN (approx. 1.5 TO).



## Reflective

Shoes fitted with inserts made of reflective materials offering greater visibility and safety.



## AT 488 Mesh Lining

AT 488 mesh lining: Lining made of tear and abrasion-resistant ladder-proof mesh fabric (25,600 cycles dry) that is very breathable. It creates an air circulation effect through a 3D air space.



## Antiperforation Midsole

Perforation resistant steel sheet outperforming the values required by the standards.



### 701LDV.235

Steel toe cap & midsole  
Heel Support System  
300°C heatproof rubber/PU sole  
Water-resistant & Breathable upper  
Scuff-resistant toe

**Lining:** Aitelle  
**Sizes:** 7 - 13.5  
**Colour:** Brown



### 701LDV.234

Steel toe cap & midsole  
Heel Support System  
300°C heatproof rubber/PU sole  
Water-resistant & Breathable upper  
Scuff-resistant toe

**Lining:** Aitelle  
**Sizes:** 7 - 13.5  
**Colour:** Black



### 703LDV.235

Steel toe cap & midsole  
Heel Support System  
300°C heatproof rubber/PU sole  
Water-resistant & Breathable upper  
Scuff-resistant toe

**Lining:** Aitelle  
**Sizes:** 7 - 13.5  
**Colour:** Brown



### 703LDV.234

Steel toe cap & midsole  
Heel Support System  
300°C heatproof rubber/PU sole  
Water-resistant & Breathable upper  
Scuff-resistant toe

**Lining:** Aitelle  
**Sizes:** 7 - 13.5  
**Colour:** Black



## 717LDV.234

Steel toe cap & midsole  
Heel Support System  
300°C heatproof rubber/PU sole  
Water-resistant & Breathable upper  
Scuff-resistant toe

**Lining:** Aitelle  
**Sizes:** 7 - 13.5  
**Colour:** Black



## 70213LD51K

Steel toe cap & midsole  
Heel Support System  
300°C heatproof rubber/PU sole  
Water-proof & Breathable upper  
Scuff-resistant toe

**Lining:** Sympatex  
**Sizes:** 7 - 13.5  
**Colour:** Black



## 72457LD21

Steel toe cap & midsole  
Heel Support System  
300°C heatproof rubber/PU sole  
Water-resistant & Breathable upper  
Scuff-resistant toe.

**Lining:** Aitelle  
**Sizes:** 7 - 13.5  
**Colour:** Brown



## 72457LD20

Steel toe cap & midsole  
Heel Support System  
300°C heatproof rubber/PU sole  
Water-resistant & Breathable upper  
Scuff-resistant toe.

**Lining:** Aitelle  
**Sizes:** 7 - 13.5  
**Colour:** Black



## 70209LD53T

Steel toe cap & midsole  
Heel Support System  
300°C heatproof rubber/PU sole  
Water-proof & Breathable upper  
Scuff-resistant toe.

**Lining:** Spotex Tepor Selene  
**Sizes:** 7 - 13.5  
**Colour:** Black



## 70211LD52T

Steel toe cap & midsole  
Heel Support System  
300°C heatproof rubber/PU sole  
Water-proof & Breathable upper  
Scuff-resistant toe.

**Lining:** Spotex Tepor Selene  
**Sizes:** 7 - 13.5  
**Colour:** Black



## 72401LD5T

Steel toe cap & midsole  
Heel Support System  
300°C heatproof rubber/PU sole  
Water-proof & Breathable upper  
Scuff-resistant toe.

**Lining:** Aitelle  
**Sizes:** 6.5 - 14  
**Colour:** Brown (black also available)



## 72401LD6LT

Steel toe cap & midsole  
Heel Support System  
300°C heatproof rubber/PU sole  
Water-proof & Breathable upper  
Scuff-resistant toe.

**Lining:** Wool & Spotex Tepor  
Selene  
**Sizes:** 6.5 - 14  
**Colour:** Black (brown also available)

## 72425CD8 Welding boot

Steel toe cap & midsole  
Heel support system.  
300°C heatproof rubber/PU sole  
Water-resistant & Breathable  
Scuff-resistant toe

**Lining:** Aitelle  
**Sizes:** 7 - 13.5  
**Colour:** Black



## 70559LE11 Chainsaw boot

Water-resistant & breathable  
Heel support system  
High-density PU injected midsole  
High traction, deep tread  
Vibram rubber outsole  
3 layers of protective material  
Scuff-resistant toe

**Lining:** AT 488 3D  
**Sizes:** 7 - 13.5  
**Colour:** Black





**SUN COUNTRY**  
SAFETY WEAR

## Contact Us

395 Earnscliffe Road,  
Vernon Bridge, PE, Canada, C0A 2E0  
info@suncountriesafetywear.com  
902-213-5193  
[suncountriesafetywear.com](http://suncountriesafetywear.com)



EXCLUSIVE DISTRIBUTOR IN NORTH AMERICA FOR

